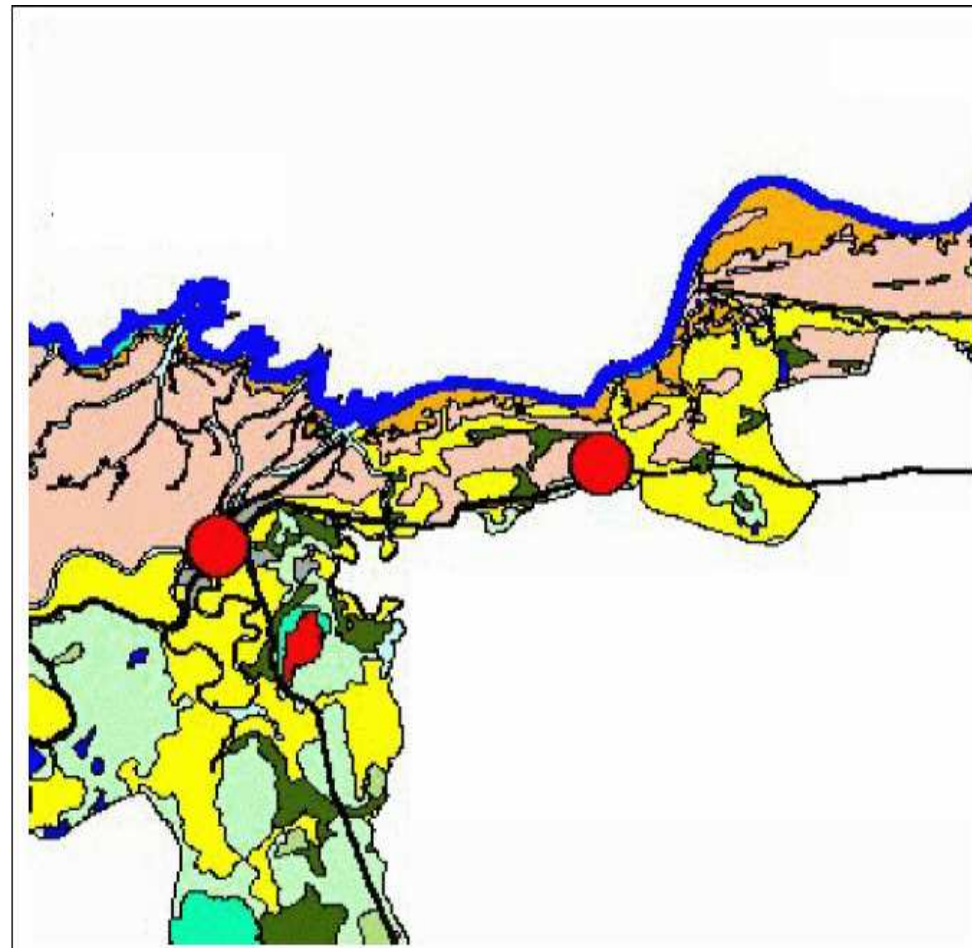


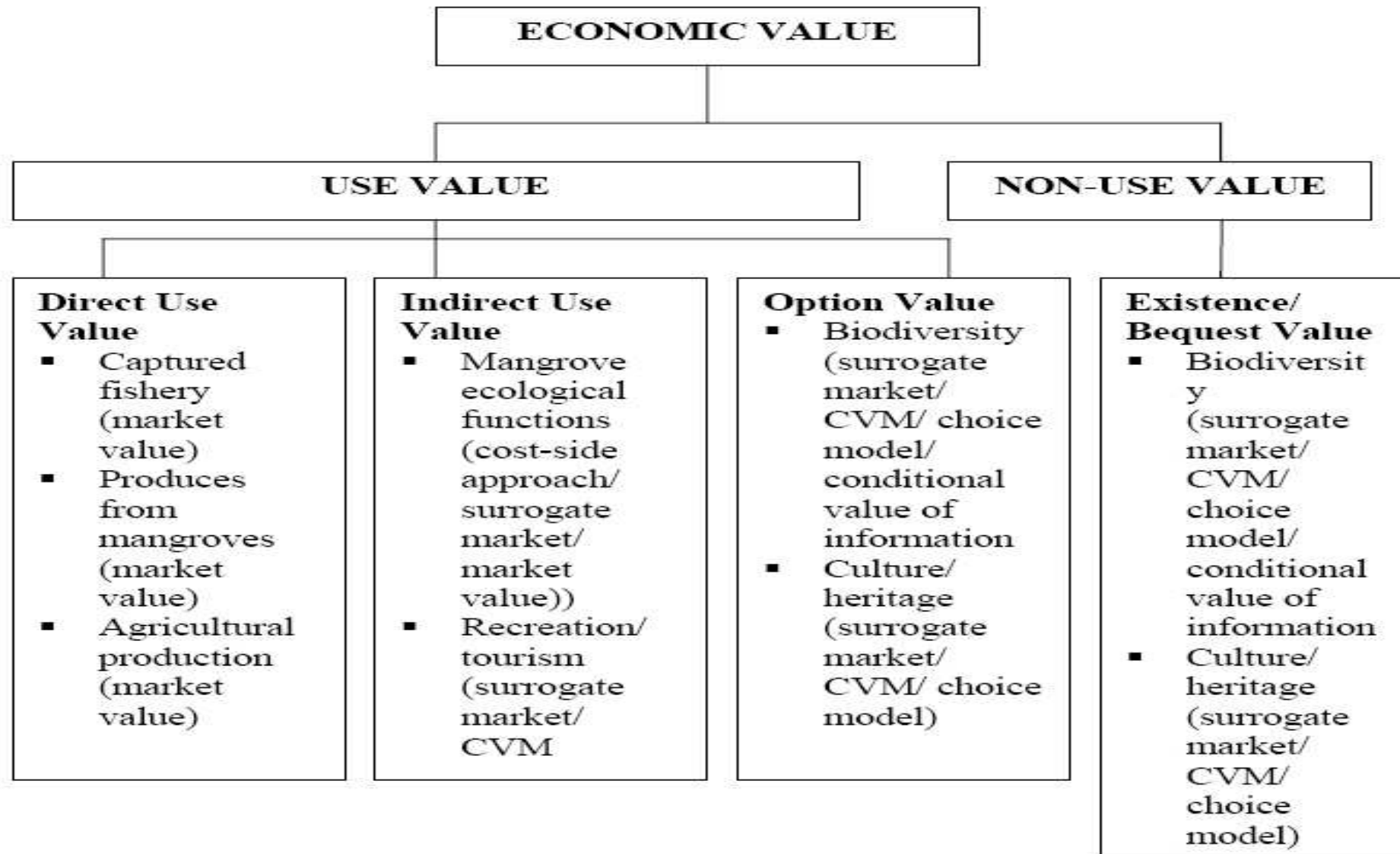
# Land use in Takien Thong, Ban Don Bay



1	<b>Agricultural Zone</b>
1.1	Paddy field
1.2	Fruit orchard
1.3	Para rubber/ oil palm plantation
1.4	Coconut plantation
1.7	Aquaculture
2	<b>Forest Zone</b>
2.1	Conserved forest
2.2	Economic forest "Gor"
2.3	Economic forest "Khor"
3	<b>Urban Area</b>
4	<b>Conserved Area</b>
5	<b>Islands</b>
6	<b>Mountain</b>
7	<b>Water</b>



# Economic valuation for coastal fishing villages



# **Building up capacity of coastal fishing communities**

- **To collect the information**
  - **Data collection and in-depth interview with local administrators, key informants, GO and NGO at sub-district (tambon) level**
  - **Identify the selected village**
  - **RRA, in-depth interview with the village headman, occupation group leaders, key informants**
  - **Questionnaire interview with the relevant villagers**
- **Information on**
  - **GIS, geographical location, resource utilization**
  - **Development and impacts on community**
  - **Conflicts in coastal resource utilization**
  - **Economic dependence on coastal habitats**
  - **Collaboration at community level**
  - **Community perspective**
  - **Community organization**

# CHARM footprint

- Five key attributes to be kept in good balance
  - Participation
  - Partnership
  - Building capacity
  - Learning and adaptation
  - Integrated approaches and method

Source: Cowling, 2005. CHARM Co-management Manual



**THANK YOU**